



FA Series

Light Duty Pneumatic
2.50 through 24.00 bore
Knife Gate Pneumatic Valve Service
150 psi Pressure Rating

The FA series pneumatic Knife Gate cylinders offers a lightweight, compact tie rod cylinder design. This design is widely used throughout the valve industry and can be used in a variety of other applications that requires a light duty pneumatic actuators. All FA series cylinders are standard with the head end extended tie rods. Available with 3 different lifting options that will assist with the cylinder and gate valve assembly installation.

Basic Product Offers

- ◆ 100,000 PSI min yield Chromed Rod
- ◆ 100,000 PSI min yield Tie Rods
- ◆ Fiberglass Composite Barrel
- ◆ Steel Machined Heads and Caps
- ◆ Head End Extended Tie Rod Mounting
- ◆ Three (3) Lifting Options
- ◆ NPTF Ports
- ◆ Mounting Nuts Are Supplied

Available Constructions

- ◆ Single Rod End
- ◆ Double Rod End
- ◆ Cap End Cover Stroke Adjustment
- ◆ Spring Extend
- ◆ Spring Return

Max Operation Pressures

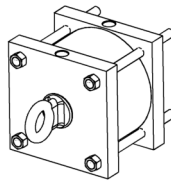
- ◆ Light Duty - 150 psi

Standard 1 Year Warranty

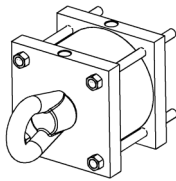
- ◆ Standard defect one (1) year or 4,000 hrs of normal application usage

Basic Lifting Offers

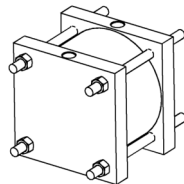
- ◆ LE - Welded Cap Lifting Eye Option



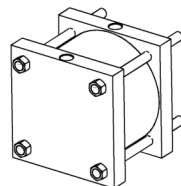
- ◆ HLE - Heavy Duty Welded Cap Lifting Eye Option



- ◆ TR - Extended Tie Rod Option



- ◆ O - Basic No Option



Optional Offers

- ◆ Porting
 - SAE Straight Threads
 - British Parallel
 - British Tapered
 - Undersized-NPTF and SAE
 - Special Requested Ports
- ◆ Seal Materials
 - Viton
 - Ethylene-Propylene
- ◆ Bore Materials
 - Chromed Bore - Type I
 - Chromed Bore - Type II
- ◆ Rod Materials
 - 303 Stainless Steel
 - 304 Stainless Steel
 - 17-4 Stainless Steel
- ◆ Special Requested Rod Ends
- ◆ Multiple Wrench Flats
- ◆ Coatings
 - Primer
 - Epoxy
 - Nickel-Plating
 - Cadmium Plating
 - Special Requested Coatings
- ◆ Rod Boots
- ◆ Jack Screws
 - Steel
 - Stainless Steel

Inspection and Test

- ◆ All cylinders are fully inspected for order accuracy and bench pressure tested before painting and shipping.
- ◆ All FA series are bench pressure tested to the cylinders' rated pressure