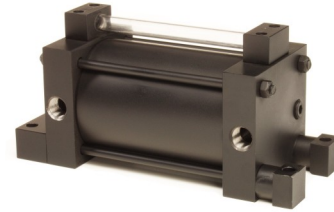


7R Series

Air/Oil Tank
3.25 through 14.00 bore
250 psi Pressure Rating

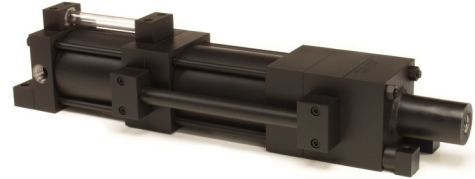
The 7R series air/oil tanks are an all steel rugged design with a sight glass for gauging oil levels within the tank. The 7R tanks can be pressurized to 250 psi to supply hydraulic fluid to low pressure hydraulic circuits.



7P2 and 7P3 Series

Air/Oil Booster
3.25 through 14.00 bore
250 psi Air Input Pressure Rating

The 7P series air/oil booster provides an efficient answer to a clamping system or high-pressure hydraulic system needs. As a viable alternative to specialized power units, the 7P booster converts pneumatic pressure to hydraulic pressure in a cost-effective manner. Hydraulic output pressure is proportional to the pneumatic pressure relative to the piston and ram areas. Booster ratios range from 2:1 up to 36:1. The 7P3 booster, shown above, incorporates an integral oil tank feed to the High Pressure chamber.



Basic Product Offers

- ◆ 100,000 PSI min yield Tie Rods
- ◆ Precision Machined Heads and Caps
- ◆ 4 Mounting Styles
- ◆ NPTF Ports

Optional Offers

- ◆ Seal Materials
 - Polyurethane
 - Viton
 - Ethylene-Propylene
 - Teflon
- ◆ Bore Materials
 - Chromed Bore - Type I
 - Chromed Bore - Type II
- ◆ Special Fluid Applications
 - Water Fitted
 - Water Glycol
 - Special Requested Mediums
- ◆ Air Bleeds
- ◆ Coatings
 - Primer
 - Epoxy
 - Nickel-Plating
 - Cadmium Plating
 - Special Requested Coatings

Optional Offers

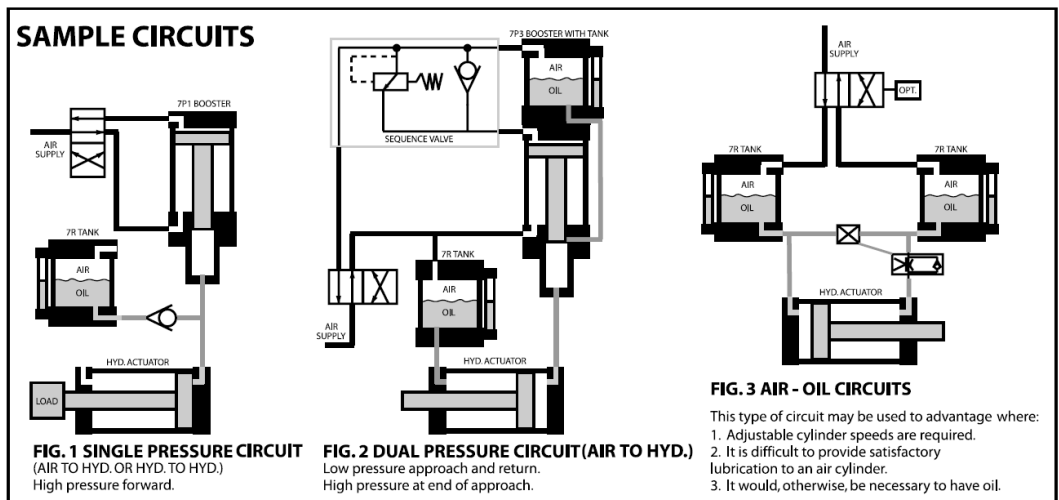
- ◆ Porting
 - SAE Straight Threads
 - British Parallel
 - British Tapered
 - Flanged SAE-Code 61
 - Flanged SAE-Code 62
 - Undersized-NPTF and SAE
 - Oversized Couples-NPT and SAE
 - Special Requested Ports

Standard 2 Year Warranty

- ◆ Standard defect two (2) year or 4,000 hrs of normal application usage

Basic Mounting Offers

- ◆ KCC - End Foot Lugs
- ◆ KL - Extended Tie Rods Both Ends
- ◆ KM - Extended Tie Rods Head End
- ◆ KN - Extended Tie Rods Cap End
- ◆ KO - Basic No Mount



Inspection and Test

- ◆ All cylinders are fully inspected for order accuracy and bench pressure tested before painting and shipping.
- ◆ All cylinders are bench pressure tested to the cylinders' rated pressure